

2019-2020 NSU TAHLEQUAH CAMPUS VIEWBOOK

NSU

You Belong Here!



NORTHEASTERN
STATE UNIVERSITY



Welcome to Northeastern State University!

At NSU, we'll turn your dreams into a career.
Here, we'll introduce you to friends you'll keep for a lifetime and help you discover
your passion and embrace your culture.

This is your NSU – where your success is our mission!

NSU AT A GLANCE

Educating Oklahoma for more than 100 years! Historic Institution since 1851!



4TH Largest 4-year public institution in Oklahoma

4TH Most Affordable Tuition

NO. 1 4-year college serving Native Americans

3 CAMPUSES

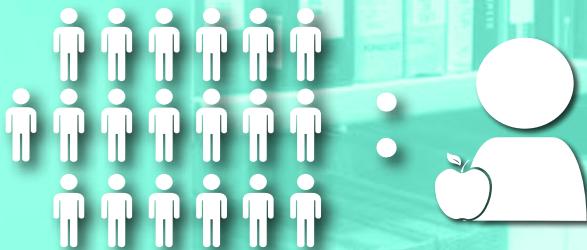
Total Enrollment: **7,879**

Named one of the top 40 safest college campuses in the nation

19:1 student to faculty/staff ratio

58 Undergraduate Degrees

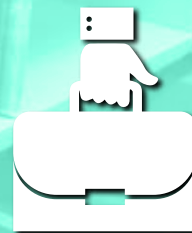
26 Graduate Degrees



1 of 23 Optometry schools in the U.S. - **the only one in Oklahoma!**

83% of classes have **30 students or less**

300+ Opportunities to Study Abroad in more than 50+ countries



170+ organizations send recruiters to at least one NSU Career Services event annually

89% of 2017-2018 graduates are employed or continuing their education



80% of 2018-2019 undergraduate students received financial aid

The RiverHawk Community

Your experiences outside the classroom will become some of your favorite college memories. We make it easy to connect to the NSU community, so you can make friends you'll want to keep in touch with long after graduation.

Find your footing

Rookie Bridge Camp is a fun NSU tradition that includes a float trip on the Illinois River and other activities designed to help you make friends and learn what it means to be a RiverHawk.

SOAR, or Student Orientation, Advising and Registration, is our official student orientation day for freshmen. On this day, you will register for classes and receive your student ID!

Welcome Week will help prepare you to be successful in and out of the classroom. Welcome Week is part of your University Strategies class and is the week prior to classes!

Find your fun

NSU is home to **10 NCAA athletics teams**, and we love cheering on the RiverHawks. As a student, you'll receive free admission to regular season home games for all NSU sports. Visit goriverhawksgo.com for more information.

With **more than 20 intramural activity options**, there will always be a fun game to join. For more details, visit nsuok.edu/intramurals.

A visit to **NSU's Art Gallery** will inspire your creativity by showcasing NSU student art projects.

Find your niche

Whether you want to learn a new hobby, explore your culture or build leadership skills, there is a club that's perfect for you. For a list of all student organizations, visit nsuok.edu/organizations.

Find your purpose

Community service is a big part of RiverHawk culture. At NSU, you'll find numerous opportunities to give back with your classmates.

For more information on student engagement call:

918.449.2526

or visit:

nsuok.edu/engagement.

HI! I'M ROWDY,

NSU's official mascot.

I'll be here to share helpful information throughout the viewbook.

Be sure to check out our website www.nsuok.edu for more information about NSU!





U.S. Veterans are important to NSU. Designated Veteran lounges are available on the Tahlequah and Broken Arrow campuses. These spaces provide an area for student Veterans to escape the hustle of campus life, study, and interact with one another!



Not sure what to focus on?

Visit nsuok.mymajors.com for an assessment that will suggest majors that would be your best fit based on your interests and strengths.



Our Degree Programs

We offer strong academics focused on career readiness, as well as hands-on immersive learning experiences ranging from robotics to reading labs.

58+
DEGREES
INCLUDING
ONLINE

College of Business & Technology

nsuok.edu/business/technology

- » Accounting
 - Managerial
 - Public
- » Business Administration
 - General Business
 - Health Care Mgmt
 - International Business
 - Business Analytics
- » Environmental, Health & Safety Mgmt
 - Environmental Mgmt
 - Safety Mgmt
- » Finance
 - Financial Mgmt
 - Financial Planning
- » Health Organizations Administration
- » Hospitality & Tourism Mgmt
- » Information Systems
- » International Business Mgmt
- » Management
 - General Mgmt
 - Human Resource Mgmt
 - Entrepreneurship
- » Marketing
 - Digital Marketing
 - General Marketing
- » Supply Chain Mgmt
- » Technology

College of Education

nsuok.edu/education

- » Early Childhood Education
- » Elementary Education
- » Health & Human Performance
 - Clinical / Wellness
 - Recreation / Fitness
- » Health & Physical Education
- » Psychology
- » Secondary Education
 - Art
 - Cherokee
 - English
 - Math
 - Music
 - Science
 - Social Studies

- Spanish

- » Special Education - Mild/Moderate Disorders

College of Liberal Arts

nsuok.edu/liberalarts

- » American Indian Studies
 - General Studies
 - Sovereignty, Health & Current Issues
- » Art
 - Graphic Design
 - Studio Art 2D
 - Studio Art 3D
- » Art Education
- » Cherokee Education
- » Cherokee Cultural Studies
- » Communication Studies
 - Communication in Relationships
 - Corporate Communication
- » Creative Writing
- » Criminal Justice
- » Cyber Security
- » Drama
- » English
- » English Education
- » General Studies
- » Geography and Sustainability
- » History
- » Homeland Security
- » Legal Studies
- » Media Studies
 - Multimedia
 - Public Relations / Advertising
- » Music
 - Jazz
 - Music Business
 - Musical Arts
 - Performance
- » Music Education
- » Political Science
- » Social Studies Education
- » Social Work
 - General Studies
 - Child Welfare
- » Sociology
- » Spanish

- » Spanish Education

Gregg Wadley College of Science & Health Professions

nsuok.edu/science/health

- » Applied Physics
- » Cell & Molecular Biology
- » Chemistry
 - Biochemistry
 - Environmental
 - Professional
- » Computer Science
- » Integrative Biology
 - Fisheries & Wildlife
 - Organismic
- » Mathematics
- » Mathematics Education
- » Medical Laboratory Science
- » Nursing (online RN to BSN only)
- » Nutritional Sciences
 - Allied Health
 - Dietetics
- » Science Education
 - Biology
 - Chemistry
 - Earth / Space
- » Speech-Language Pathology

Graduate College

nsuok.edu/graduate

College of Extended Learning

finishatnsu.com

- » Criminal Justice

College of Optometry

optometry.nsuok.edu

Pre-Professional

Pre-Professional programming and advisement are available for students interested in pursuing professional degrees in areas such as Medicine, Law, Occupational Therapy and Optometry.

NORTHEASTERN STATE UNIVERSITY

ESTIMATED COST OF ATTENDANCE & SCHOLARSHIP OPPORTUNITIES

With one of the most affordable tuition rates in Oklahoma, NSU is a cost-effective way to earn a college degree. Plus, there many scholarships and financial aid options available to you as a student to make your out-of-pocket costs even lower.

Scholarship Deadlines

DEC. 2

Early Freshmen Scholarships

Want an early scholarship decision? Students that have been admitted and submit their freshmen general scholarship application before December 2, may be eligible for an early scholarship decision. Decisions will be made and released before the end of December.

FEB. 3

Freshmen Honors Scholarships

High achieving students can apply for NSU's Honors Program. Members of the program are eligible for scholarships, honors courses and a variety of enrichment activities.

FEB. 3

President's Leadership Class

The President's Leadership Class is a carefully selected group of incoming freshmen with a demonstrated interest in leadership and a passion for community service.

MARCH 2

Freshmen Scholarships

These scholarships are awarded to incoming freshmen and include privately funded awards from NSU's foundation.

MAY 1

Transfer Scholarships

This program awards scholarships to students transferring to NSU for the first time.

AUG. 3

Quad State Scholarships

These awards may be available to incoming freshmen and transfer students from Arkansas, Kansas, Missouri and Texas.

AUG. 3

Tribal Heritage Scholarship

Non-resident students that possess a tribal citizenship card, meet regular admission requirements and enroll full time, may be eligible for a non-resident tuition waiver.

2019-2020 Tuition & Fees

	IN-STATE:	OUT-OF-STATE:
Tuition:	\$5,913* (\$197.10/hr)	\$15,315 (\$477.10/hr)
Fees:	\$1,002* (\$33.40/hr)	\$1,002* (\$33.40/hr)
Books & Supplies:	\$1,380	\$1,380
Room & Board:	\$7,290**	\$7,290**
TOTAL PER YEAR:	\$15,585	\$24,987

* Based on 30 hours per year. Book cost based on yearly average.

** Room in Leoser Complex with a 15 meal/week and a \$200 flex meal plan.

NEED FINANCIAL AID?

Complete the **FREE** Application for Federal Student Aid (FAFSA) as soon as possible after Oct. 1. State grants will be awarded on a first-come, first-serve basis.

You can sign up for a FSA I.D. number at: fsaid.ed.gov and apply at fafsa.gov.

Don't be fooled by websites that try to make you pay to fill out your FAFSA – it's FREE!

NSU's FAFSA code is 003161.



For more information about scholarships visit nsuok.edu/scholarships or call **918.444.3470**.

\$37 million
in **scholarships**
and **grants**
awarded in
2017-2018!

Students are only eligible to receive one of the scholarships listed.

These awards may also be stacked with Oklahoma's Promise funding.

Scholarships are not automatic, are limited in number, and based on scholarship application receipt date.

Students can complete scholarship applications when they apply for admission to NSU; however, scholarships will NOT be awarded until a student has been admitted.

Students must be admitted before each scholarship deadline.

Freshmen Honors & PLC Scholarships

(FEB. 3 DEADLINE)

* Amounts may vary depending on number of hours enrolled and campus residency.
+ Must be Oklahoma resident to receive this award.

Scholarship	Amt/Year*	Min. ACT Score	Min. GPA	Duration
Baccalaureate Scholars*	\$13,095	30	3.5	4 Years
Academic Scholars*	\$12,095	28	3.8 & Top 4%	4 Years
Northeastern Honors Scholars*	\$11,095	28	3.5	4 Years
President's Leadership Class Scholarship*	\$10,095	20	3.25	4 Years

Freshmen General Scholarships

(DEC. 2 - DEADLINE FOR EARLY FRESHMEN SCHOLARSHIP; MARCH 2 - FRESHMEN SCHOLARSHIP DEADLINE)

+ Must be Oklahoma resident to receive this award.

Scholarship	Amt/Year*	Min. ACT Score	Min. GPA	Duration
Collegiate Scholars*	\$4,150	26	3.5	4 Years
University Scholars*	\$3,900	26	3.25	2 Years
Green & White Scholars*	\$2,450	22-25	3.25	2 Years
Valedictorian Scholars*	\$2,300	20-25	Class Rank of 1	4 Years
Freshmen Scholars*	\$1,550	20-21	3.25	1 Year

Transfer Student Scholarships

(MAY 1 DEADLINE)

** Only those applicants that are currently active and in good standing with the Tulsa Achieves program are eligible. + Only students transferring from one of our Smart Choice partner institutions are eligible (CASC, CSC, EOSC, NEO, TCC).

Scholarship	Amt/Year*	Min. ACT Score	Duration
Phi Theta Kappa	\$2,500	PTK Members	2 Years
RiverHawk Transfer	\$1,000	3.5 - 4.0	1 Year
Smart Choice Presidential	\$4,000	3.8 - 4.0	2 Years
Smart Choice+	\$1,500	3.5 - 4.0	2 Years
Smart Choice Part-time*	\$500	3.5 - 4.0	1 Year
Tulsa Achieves**	\$2,000	3.75 - 4.0	2 Years
Tulsa Achieves**	\$1,500	3.5 - 3.74	2 Years
Tulsa Achieves**	\$1,000	3.25 - 3.49	1 Year

Non-resident Scholarships

(AUG. 3 DEADLINE)

Must be a resident of Arkansas, Kansas, Missouri or Texas.

* Legacy students are children or grandchildren of NSU graduates.

** Applies to non-resident tuition costs (\$280/hr).

*** Applies to non-resident tuition costs (\$280/hr) for students living on campus.

	ACT	GPA	Waiver**	On-Campus Waiver***
	28+	3.0 - 4.0	100%	100%
Quad State Incoming Freshmen Scholarship	24 - 27	3.0 - 4.0	80%	100%
	20 - 23	2.75 - 4.0	60%	80%
	Legacy*	N/A	100%	100%
	N/A	3.5 - 4.0	80%	100%
Quad State Transfer Scholarship	N/A	3.0 - 3.49	60%	80%
	N/A	2.5 - 2.99	40%	60%
	N/A	Legacy*	100%	100%

Are you a tribal citizen who lives out of state?

You could be eligible for a non-resident tuition waiver through the Tribal Heritage Scholarship program. **Apply by Aug. 3.**

NORTHEASTERN STATE UNIVERSITY HOUSING & MEAL PLANS

Northeastern State University's campus is large enough to be exciting, yet small enough to feel like home. It's designed to serve all your needs, from state-of-the-art labs and classrooms to an amazing array of sports and recreation facilities including sand volleyball courts and an outdoor swimming pool. When hunger hits, stop by Starbucks at Rivers Edge, Chick-Fil-A or one of the other six restaurants in the University Center.



7
LIVING
LEARNING
COMMUNITIES



Eat

Campus Housing is an all-inclusive living experience with an outdoor pool and sand volleyball courts, 12 restaurants, student lounges with pool tables and free Wi-Fi, and free laundry services.

Campus Meal Plans

Visit nsuok.edu/housingdiningrates for specific pricing. Flex Dollars can be used for off-hours meals or convenience items.

Plan Type	Meal Count	Flex/ Semester	Single Semester	Academic Year
Residential	17 meals	\$150 Flex	\$2,070	\$4,140
	15 meals	\$200 Flex	\$2,045	\$4,090
	12 meals	\$200 Flex	\$1,990	\$3,980
	10 meals	\$350 Flex	\$1,955	\$3,910
	8 meals	\$175 Flex	\$1,500	\$3,000
	150-meal block	\$75 Flex	\$1,475	\$2,950
Commuter	25 meals	\$75 Flex	\$315	\$630
	50 meals	\$75 Flex	\$530	\$1,060
	80 meals	\$100 Flex	\$775	\$1,550

Market Café
UNIVERSITY CENTER 1ST FLOOR



SEÑOR SABROSO



Freshëns®



Play

Get fit in the recently expanded **\$5.5 million NSU Fitness Center**. It's free to students and offers an Olympic size swimming pool, an indoor track, two full-sized basketball courts, open areas for weight and cardio training, group fitness classes and convenient locker rooms and showers.

Visit nsuok.edu/fitnesscenter to learn more.

Shop

Last year students **saved more than \$875,000** by **renting textbooks** through our on-campus Barnes & Noble bookstore, the RiverHawk Shoppe! The bookstore also has fan apparel, academic supplies and snacks!

Visit: nsuok.bncollege.com to shop online.

Nest

As a student, you'll have the choice of a traditional residence hall, a suite-style complex, or a married student apartment.

NSU also offers seven interest-specific Living Learning Communities, or LLCs, where you can live with other students who are in the same academic program or student organization as you.

Housing Costs

Housing cost estimates per semester not including meal plans.

Residence Hall	Cost
Leoser Complex (Traditional)	\$1,600
Wyly Hall (Traditional)	\$1,800
Cobb Hall (4-person suite)	\$2,250
Seminary Suites (4-person suite)	\$2,550
Seminary Suites (2-person suite)	\$2,950
Courtside Apartments <i>One to three bedroom options are available for upper-class and married/family housing accommodations</i>	\$3,150 - \$4,000

The NSU Success Team

We realize that college can be overwhelming...
NSU's success team can help you every step of the way.

We're here
to help
YOU succeed!



Academics

Find your best career path, and stay on track to graduate.

nsuok.edu/advising

Veteran Services

As a Yellow Ribbon School, NSU serves 300+ students with veteran benefits.

veterans@nsuok.edu

Self Care

Take advantage of campus health services.

nsuok.edu/healthservices

FREE counseling and victim advocacy through HawkReach.

hawkreach@nsuok.edu

Finances

NSU's Financial Literacy Center can help you make your best financial plan.

hawkcents@nsuok.edu

Career Services

Career Services offers career counseling, resume preparation, and interviewing strategies.

HireNSUGrads.com

Other Assistance

Student Disability Services is here to provide the resources you need to be a successful student.

nsuok.edu/disabilityservices

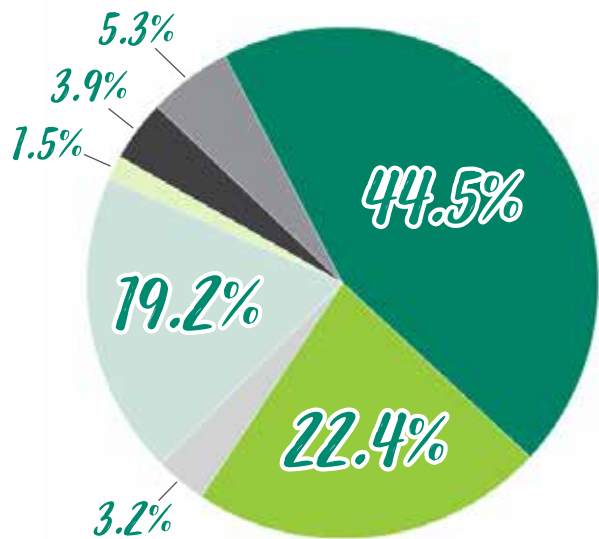
RiverHawk Culture

NSU's diverse community will help you embrace your heritage, and learn about others. Here's a look at some of the ways cultures shine on campus:

- » The Center for Tribal Studies is here to assist Native American students, facilitate relationships with Tribal nations and to enrich the heritage of NSU. Contact tribalstudies@nsuok.edu for more information.
- » Study Abroad opportunities are readily available to make your college experience global. Visit nsuok.edu/international for more details.
- » You'll have the opportunity to attend a variety of events highlighting cultures from around the world. Some events you can expect each year include World Fair, Holi Festival, Saudi Day and the Symposium on the American Indian.
- » NSU has a thriving international program.



Diversity



Did you know?

Northeastern State University was founded as the Cherokee National Female Seminary in 1846, and the connection to the Cherokee Nation is still prevalent on campus today.

To learn more visit: nsuok.edu/heritage.



Fun Things To Do!

You can always take a short five-minute stroll from campus to the downtown district and absorb the live music scene, unique shops, art exhibitions and great restaurants. Grab your friends and venture off campus to the nearby Illinois River for a float trip, Lake Tenkiller for a little adventure on the water or hike to a cliff off Sparrowhawk Trail for a breathtaking view. Here's a snapshot of the fun you'll find just off campus:

- » Illinois River
- » Lake Tenkiller
- » Hiking Trails
- » Golf Courses
- » Museums
- » Tahlequah Community Playhouse
- » First Friday Art Walk
- » Red Fern Festival
- » Movies in the Park
- » Cherokee National Holiday
- » Annual Symposium on the American Indian
- » Tahlequah Farmers' Market
- » Coffee shops, restaurants and shopping
- » Snowflake Ice Rink
- » Music Festivals

RATED ONE OF AMERICA'S
Top Small Towns
by the Oklahoma Tourism and
Recreation Department

1 hour from Broken
Arrow's art,
entertainment, dining
and shopping

Capital of the
CHEROKEE NATION
and the
**UNITED KEETOOWAH BAND
OF CHEROKEE INDIANS**

The Next Step Is Yours



- Take the ACT or SAT**
Register at actstudent.org or collegeboard.com. The NSU ACT Code is 034081. The NSU SAT Code is 6485.
- Attend RiverHawk Rally (Nov. 16) or RiverHawk Jam (Feb. 15)**
Get a closer look at life as an NSU student at one of NSU's campus preview events. You'll get to tour campus, meet faculty and current students, and check out university housing. While you're here, we'll have sessions about admissions, scholarship opportunities and financial aid. Lunch is provided, and you'll get a free T-shirt and free admission to a home game. Visit nsuok.edu/RiverHawkRally and nsuok.edu/RiverHawkJam for more details.
- Take a Campus Tour**
Schedule a visit at nsuok.edu/campustour.
- Complete the Application for Admission at: apply.nsuok.edu**
Don't forget to submit the \$25 non-refundable application fee.
- Submit Your Official Transcripts and ACT or SAT Test Scores**
Your application is not complete until these are received.
- Apply for Financial Aid and Scholarships**
Financial aid and scholarships cannot be awarded until after you're admitted, but you can apply now. Find NSU-specific scholarships online at nsuok.edu/scholarships. NSU's **FAFSA code is 003161**. Scholarship applications available **Sept. 1**. FAFSA available starting **Oct. 1**.
- Apply for Housing**
Apply for housing starting **Oct. 1** online at housing.nsuok.edu.
- Book Your SOAR Session**
All incoming freshmen students are required to attend a Student Orientation, Advising, and Registration session. This is where you'll register for classes, receive your student ID and learn more about NSU. Book your appointment at nsuok.edu/soar.
- Sign Up for Rookie Bridge Camp**
Current students have planned two fun-filled days of activities to help you transition into college life. To sign up visit nsuok.edu/rbc.
- Submit Your Immunization Records**
Get the details at nsuok.edu/immunization.
- Attend Welcome Week**
Welcome Week is part of your first-year course, **UNIV 1003: University Strategies**, and starts the Monday prior to the first day of class. Find out more at nsuok.edu/WelcomeWeek.



Freshmen Requirements

Option 1	Option 2	Option 3
ACT 20 <i>(Composite, no Writing)</i>	2.7 GPA <i>(cumulative, unweighted)</i>	2.7 Core GPA in 15 classes required for college entry
OR	AND	
SAT 1030 <i>(EBRW + M)</i>	Top 50% of H.S. Class	

Transfer Requirements

Option 1	Option 2	Option 3
7 - 23 Hours Credit	24 - 30 Hours Credit	31+ Hours Credit
1.7 GPA & satisfy all Freshmen adm. req.	1.7 GPA <i>(cumulative)</i>	2.0 GPA <i>(cumulative)</i>

Contact Admissions & Recruitment

918.444.4675 or 800.722.9614

nsuinfo@nsuok.edu

701 N. Grand Ave., Tahlequah, OK 74464



Go2NSU.com

Mark Your Calendar!

SEPT. 24

SENIOR DAY

OCT. 1

FAFSA AVAILABLE

NOV. 16

RIVERHAWK RALLY

DEC. 2

EARLY FRESHMEN SCHOLARSHIP
DEADLINE

FEB. 3

HONORS & PLC SCHOLARSHIP
DEADLINE

FEB. 15

RIVERHAWK JAM

MARCH 2

FRESHMEN SCHOLARSHIP DEADLINE

March 7

ADMITTED STUDENT DAY

APRIL 1

JUNIOR DAY

MAY 1

TRANSFER SCHOLARSHIP DEADLINE

AUG. 3

DEADLINE FOR
FALL APPLICATIONS

Plan Your Visit!

Sign up for a tour at:

www.nsuok.edu/campustour

Kansas

● Wichita (4 hr)

Missouri

● Springfield (3 hr)

● Joplin (2 hr)

Oklahoma

● Tulsa

★ BROKEN
ARROW (1 hr)

★ TAHLEQUAH

● Oklahoma
City (3 hr)

★ MUSKOGEE
(30 min)

● Fayetteville (1.5 hr)

Arkansas

● Ft. Smith
(1.25 hr)

● Little Rock
(3.5 hr)

★ NSU Tahlequah Campus

★ NSU Muskogee Campus

★ NSU Broken Arrow Campus

Distance measured from NSU,
Tahlequah Campus

Texas

● Dallas (4.5 hr)

● Texarkana (4.5 hr)



**NORTHEASTERN
STATE UNIVERSITY**

Title IX of the Education Amendments of 1972: Northeastern State University (NSU) does not discriminate on the basis of race, color, sex, national or ethnic origin, religion, disability, age, veteran status or sexual orientation in its programs and activities. These protections range to employment with and admission to NSU as well as participants in university sponsored programs. The following person has been designated to handle inquiries regarding the non-discrimination policies: Joshua Rader, Title IX Compliance Coordinator • Northeastern State University 918.444.2120 • raderj@nsuok.edu