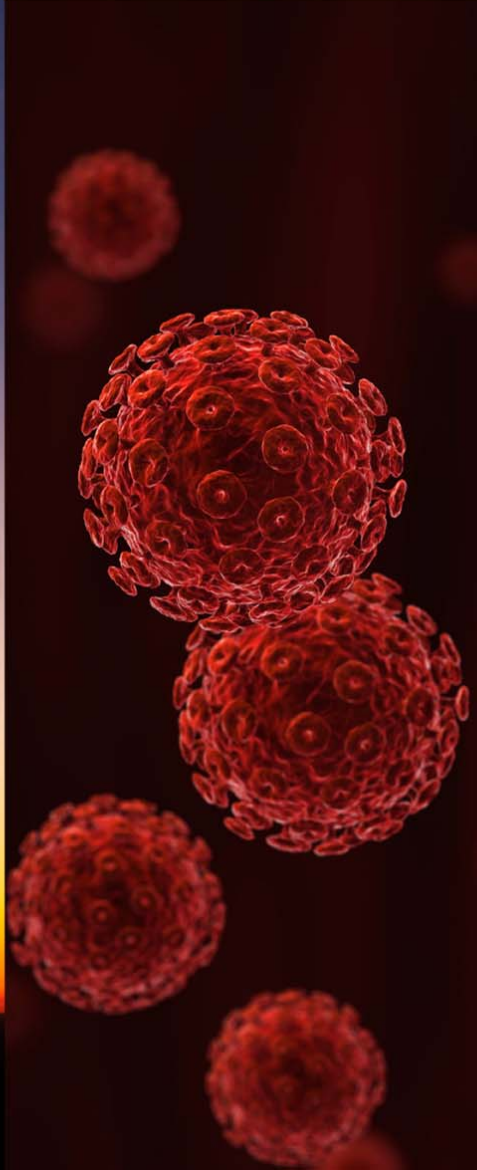


OKLAHOMA

DEPARTMENT OF COMMERCE
OKcommerce.gov



Oklahoma's Economic Trends

Deidre Myers

**Director of Research and
Economic Analysis**

November 3, 2009



Economic Trends

Demographics

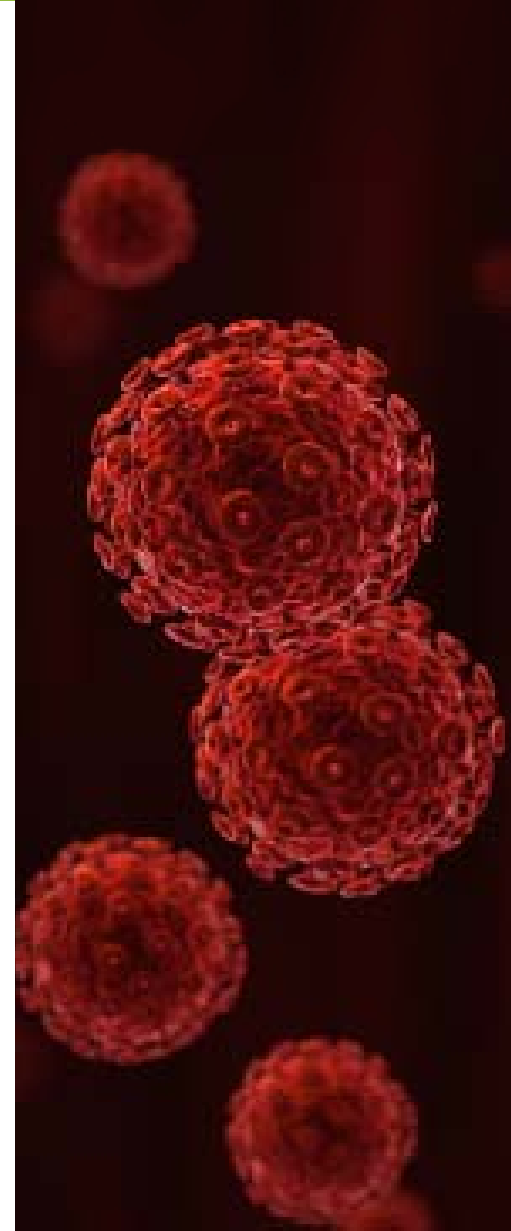
- Population, Age, Race & Ethnicity, Educational Attainment and Average Wage

Employment

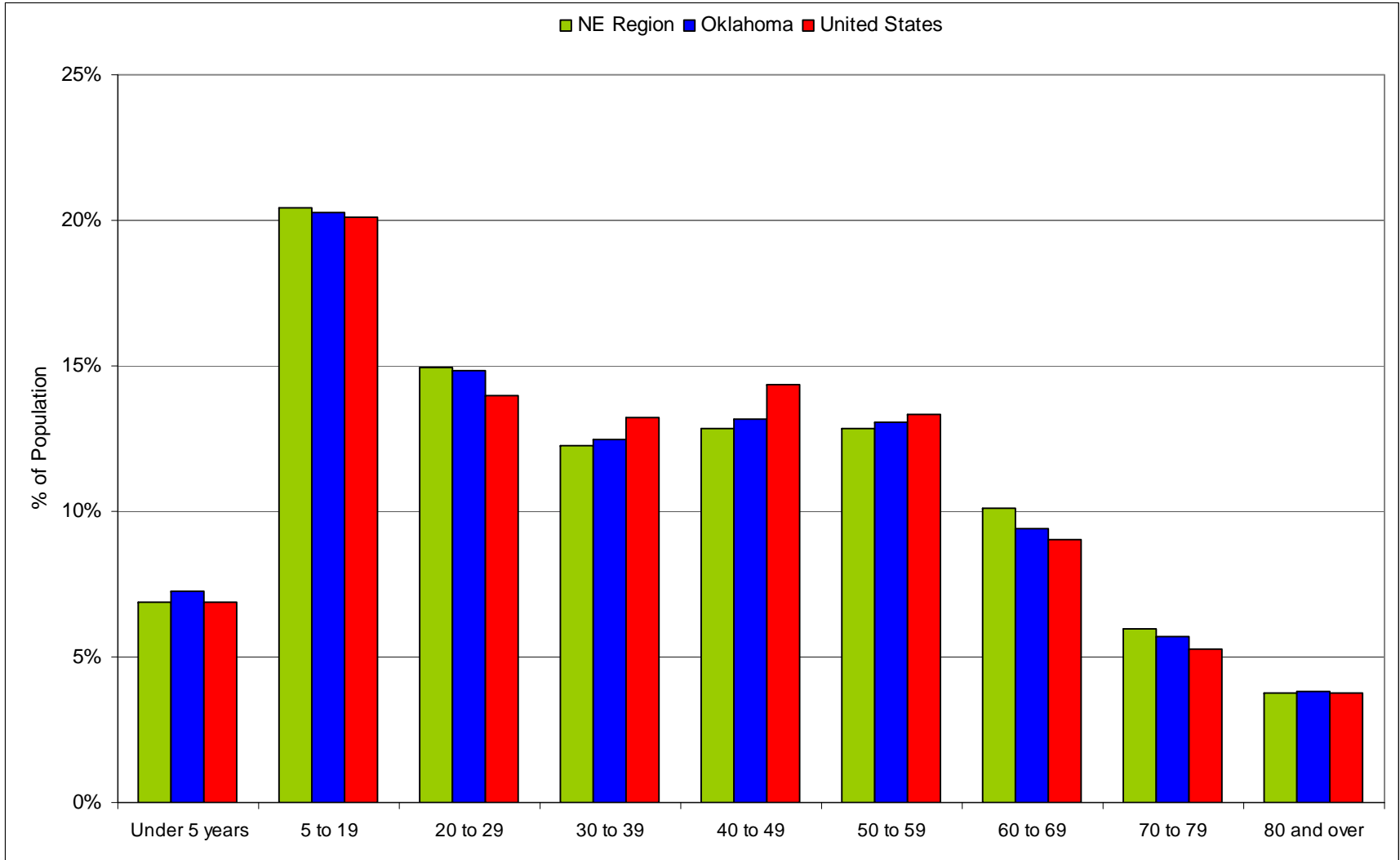
- Trends, Rate, Index and Occupations

Consumer Activity

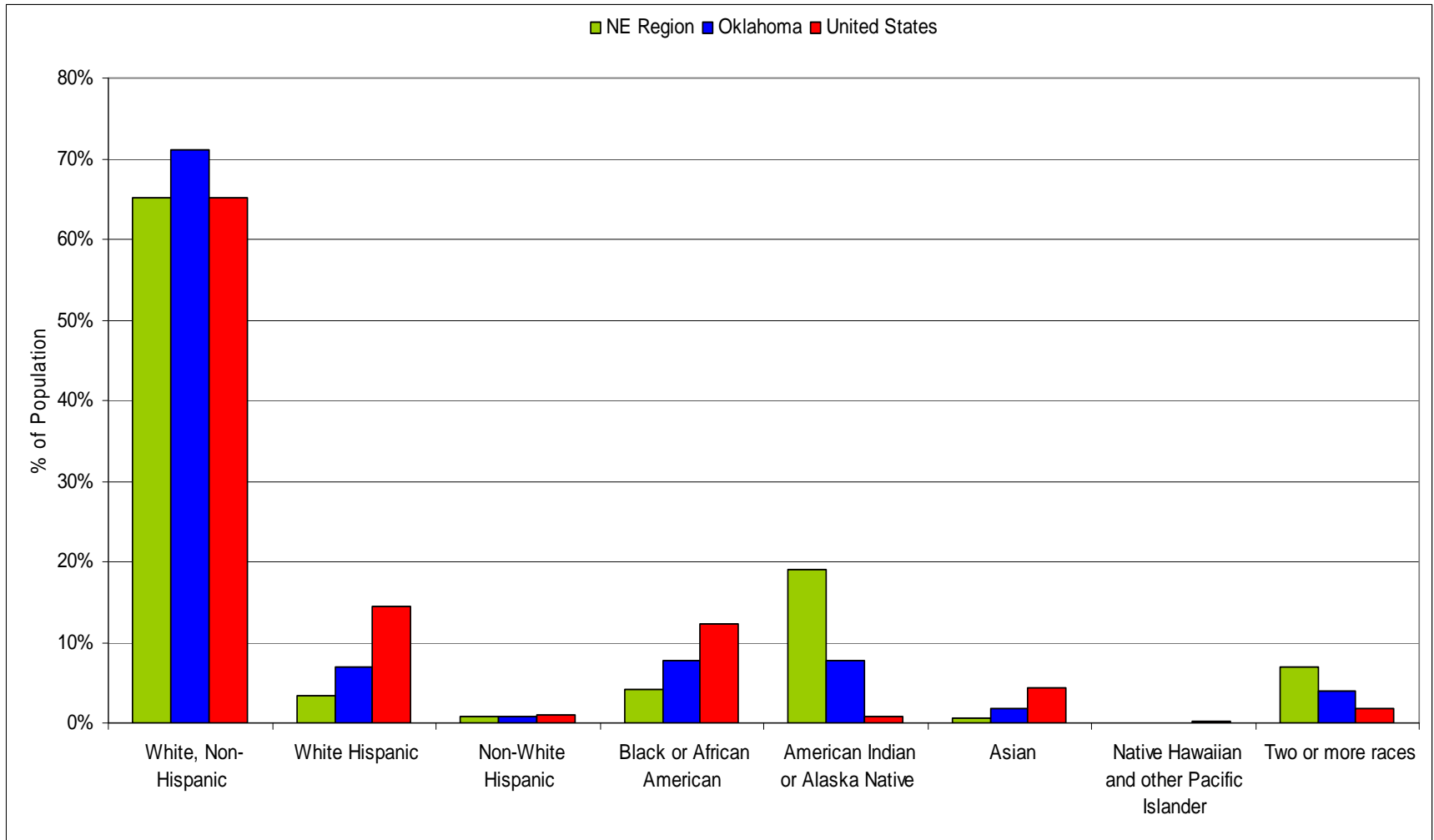
- State Revenues and Confidence



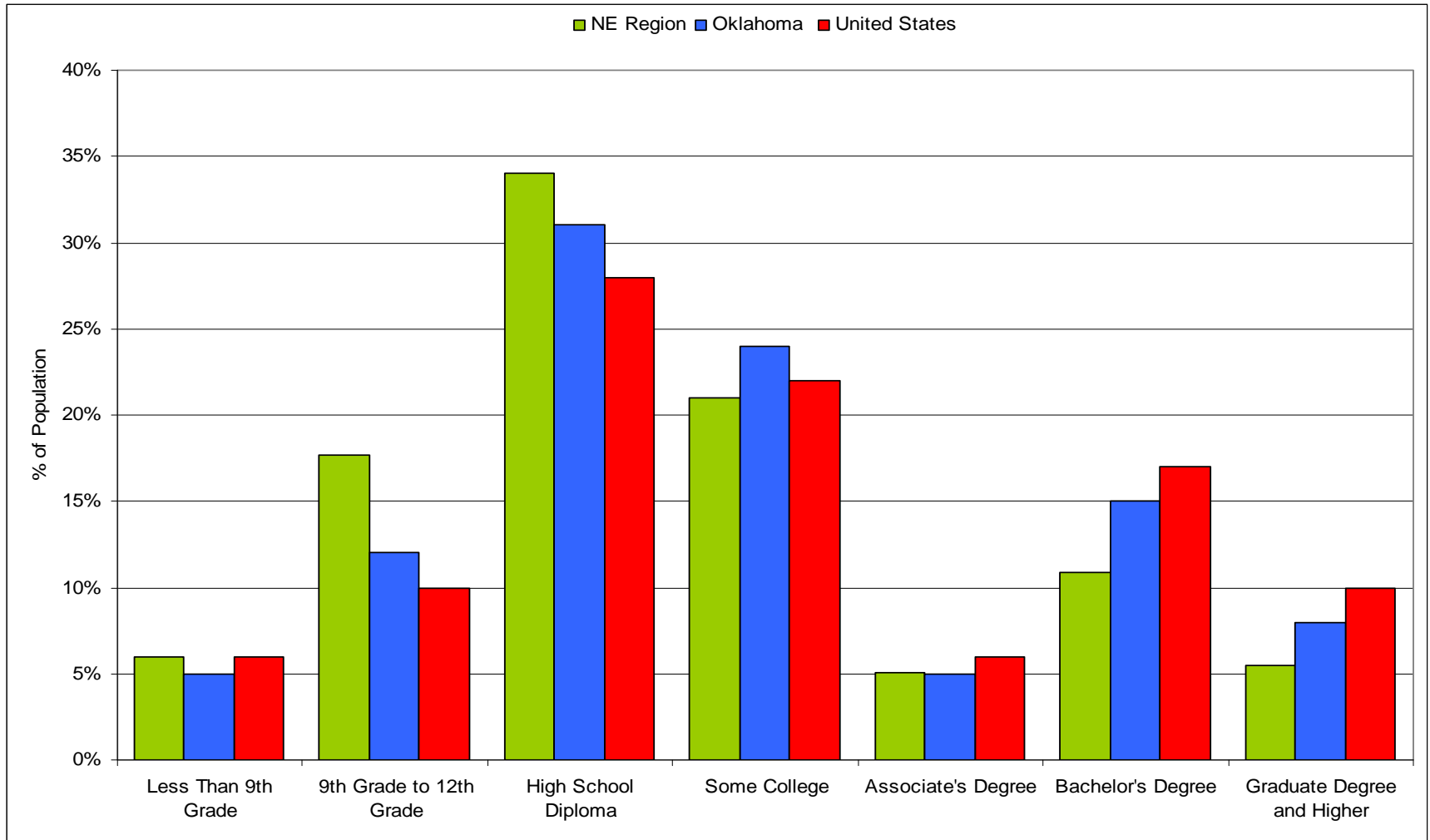
Age Distribution 2009



Race & Ethnicity Distribution 2009

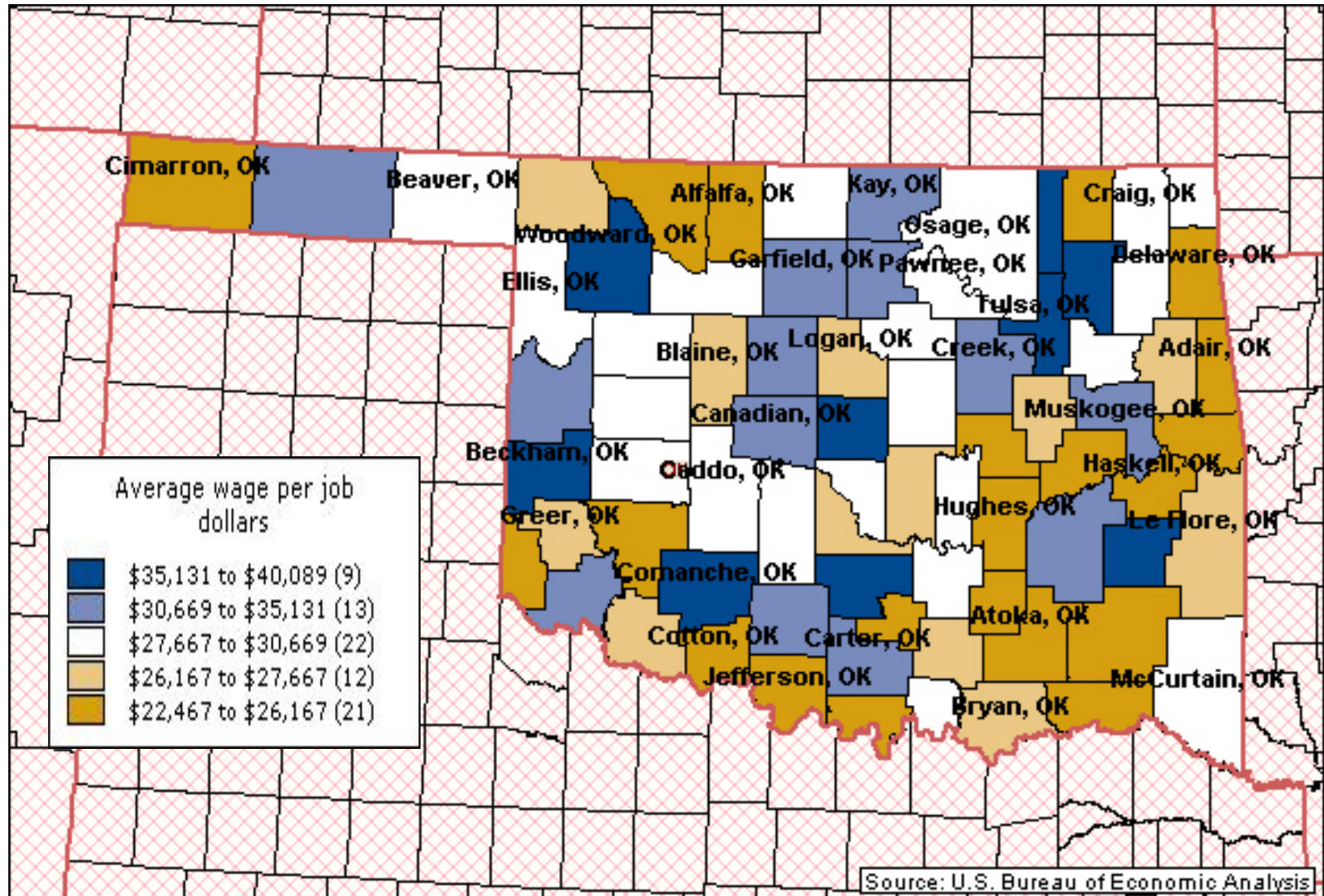


Educational Attainment 2008

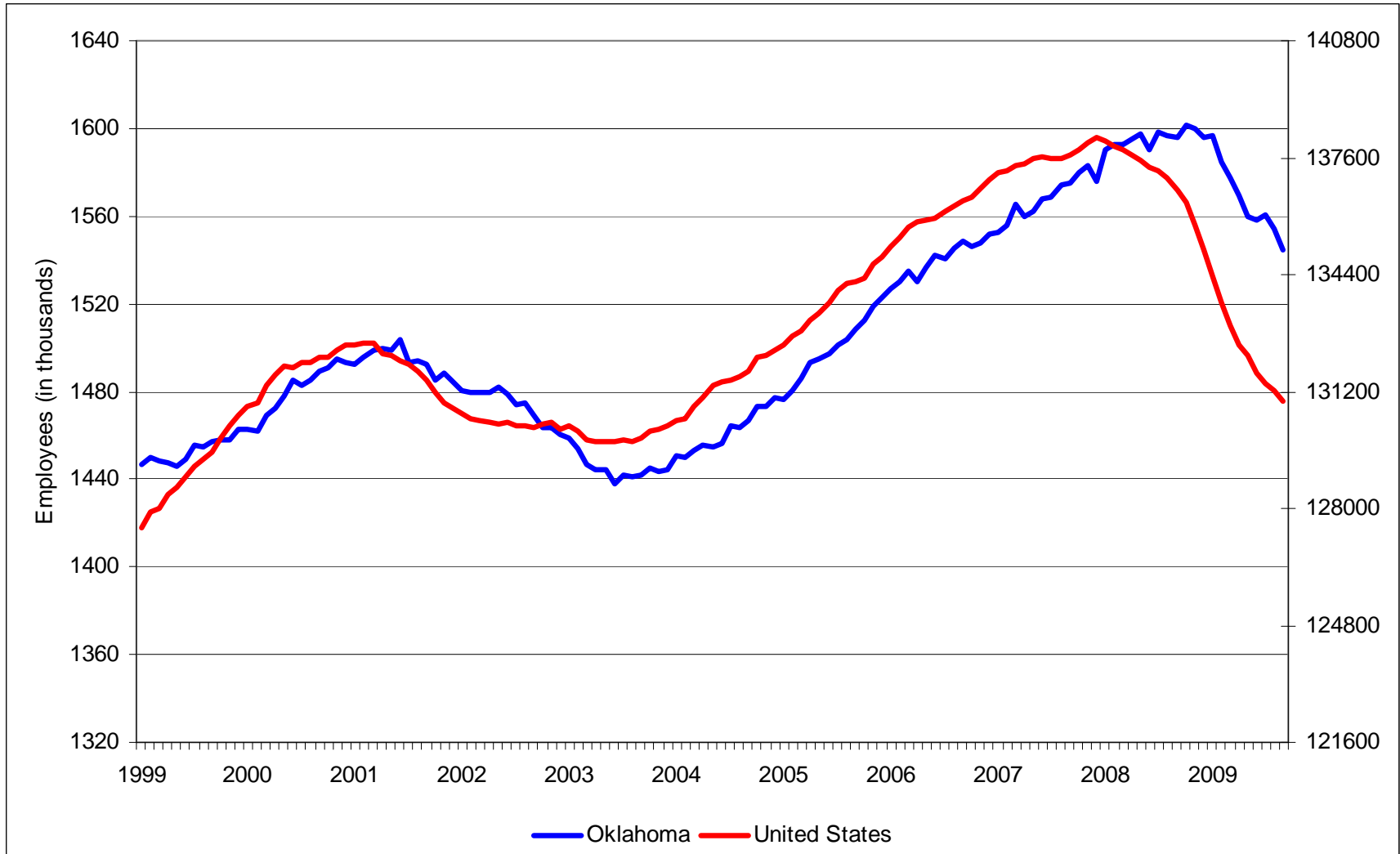


Source: EMSI, Educational Attainment Demographics 2008

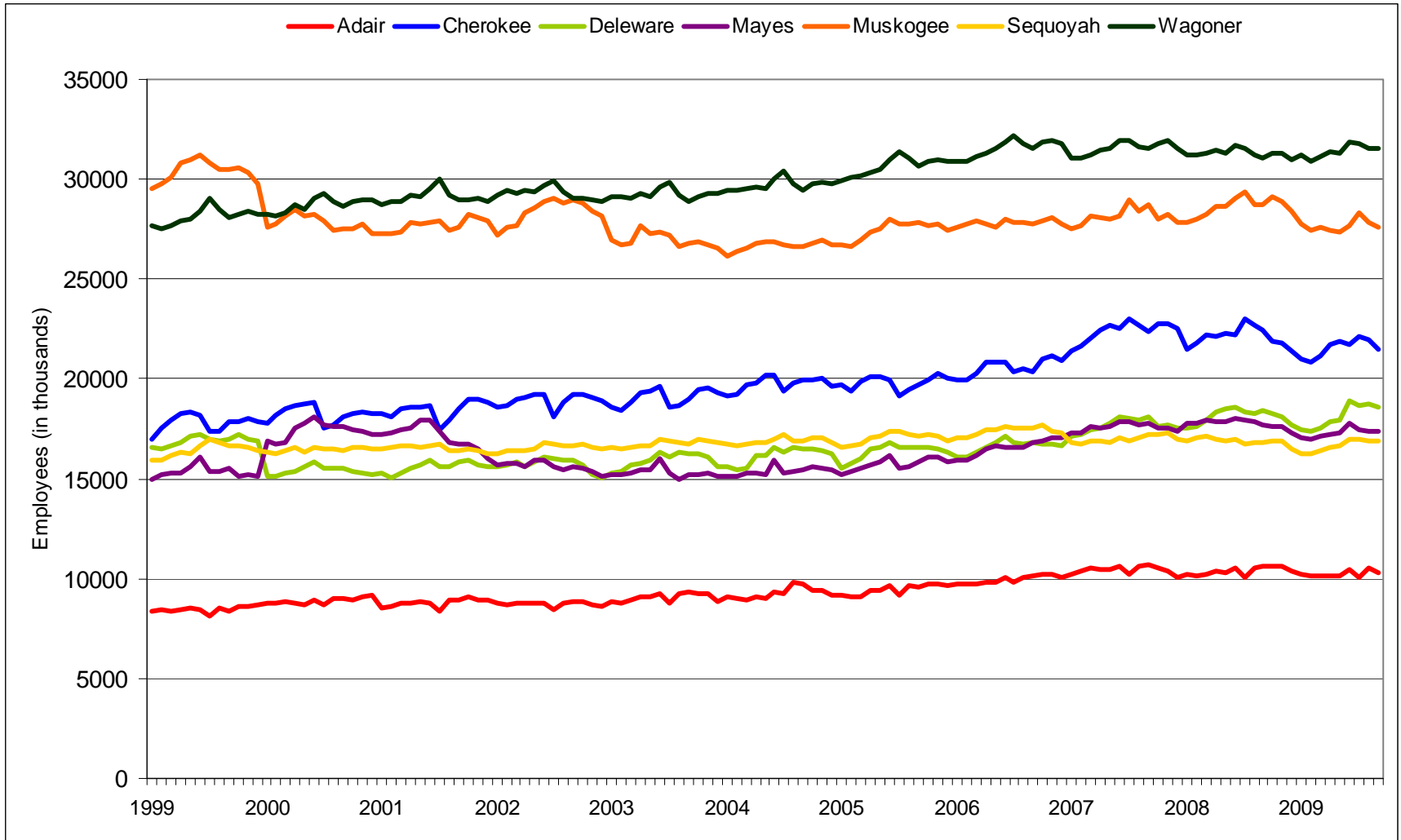
Average Wage per Job 2007



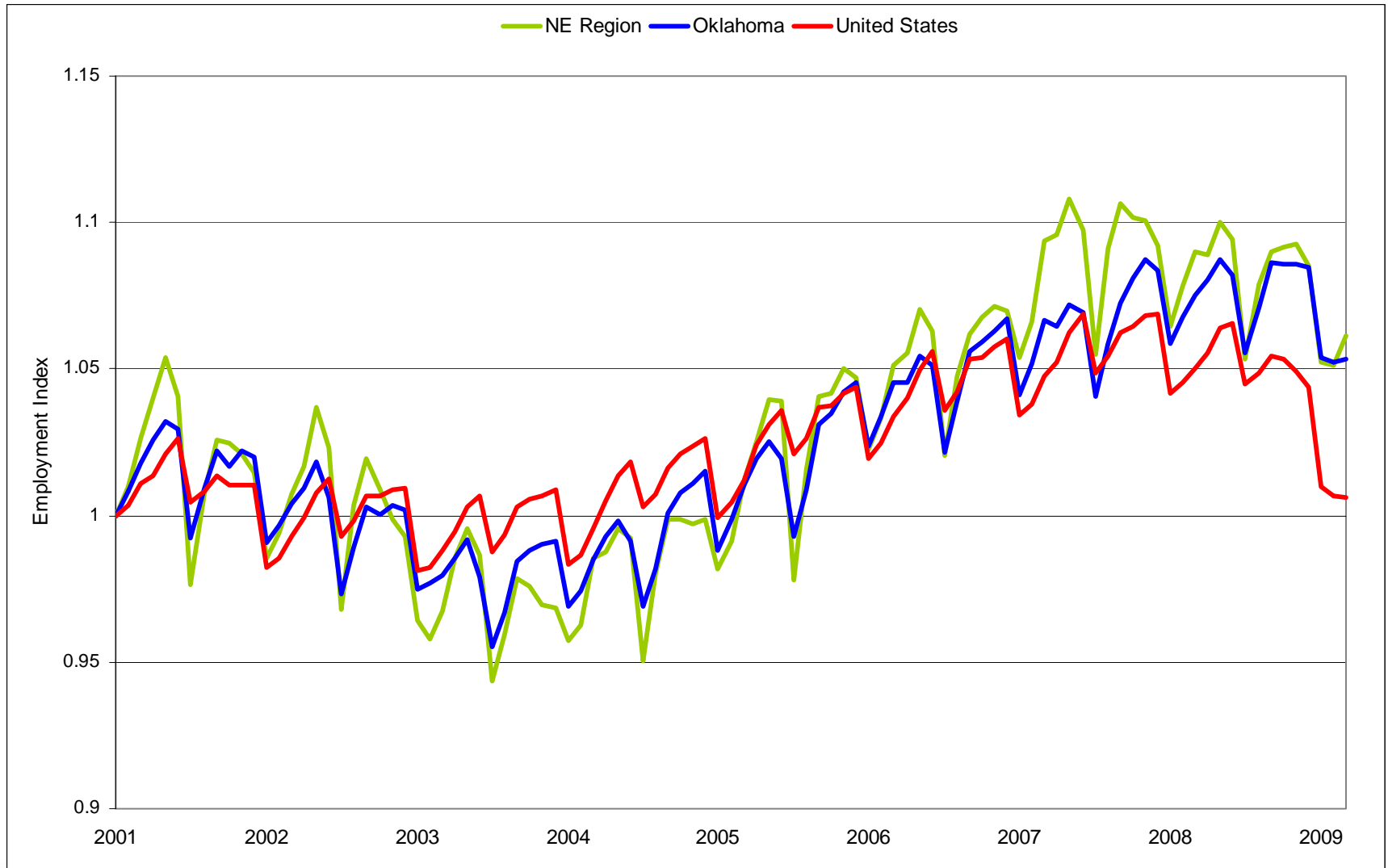
Employment



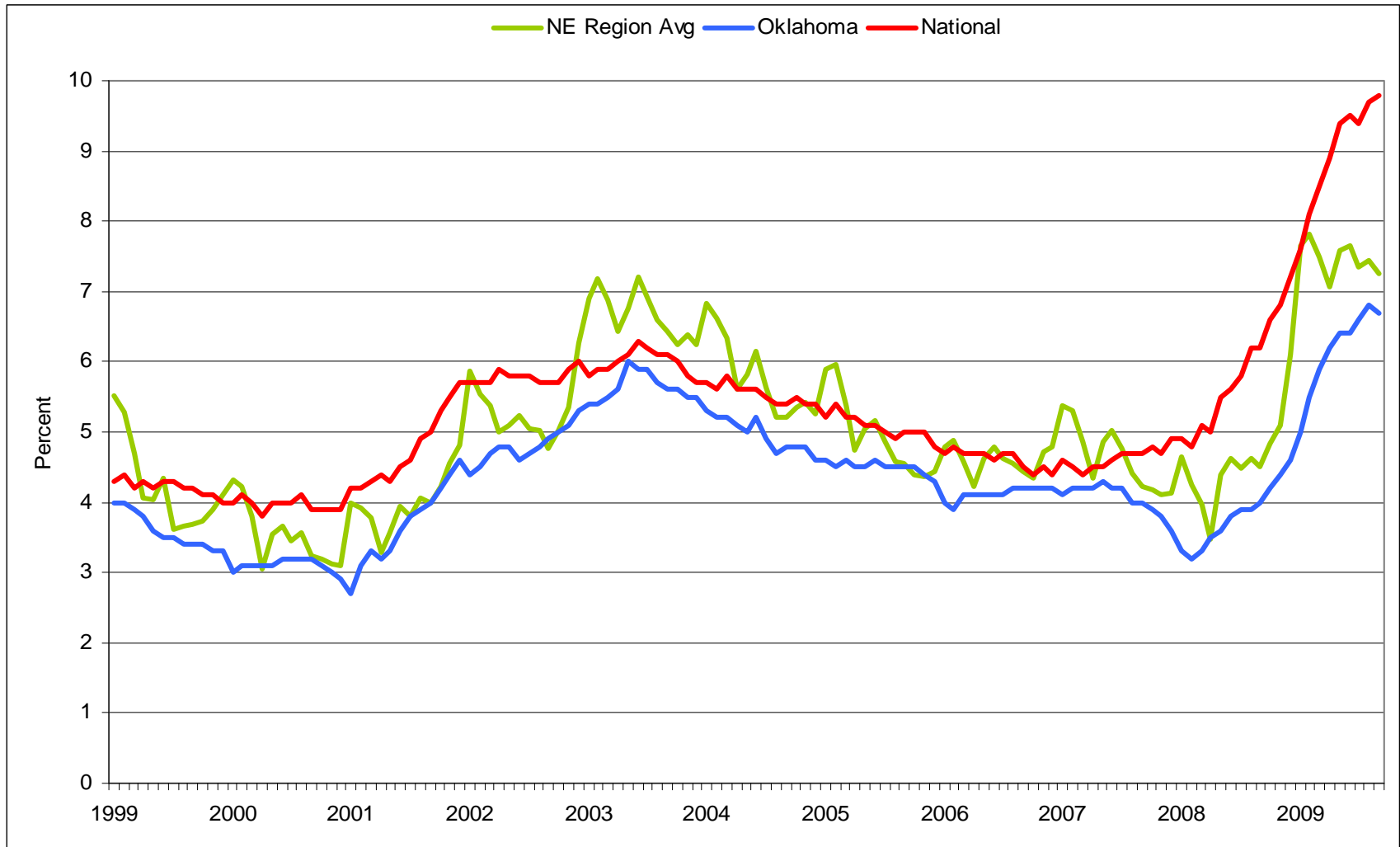
Employment for NE Region



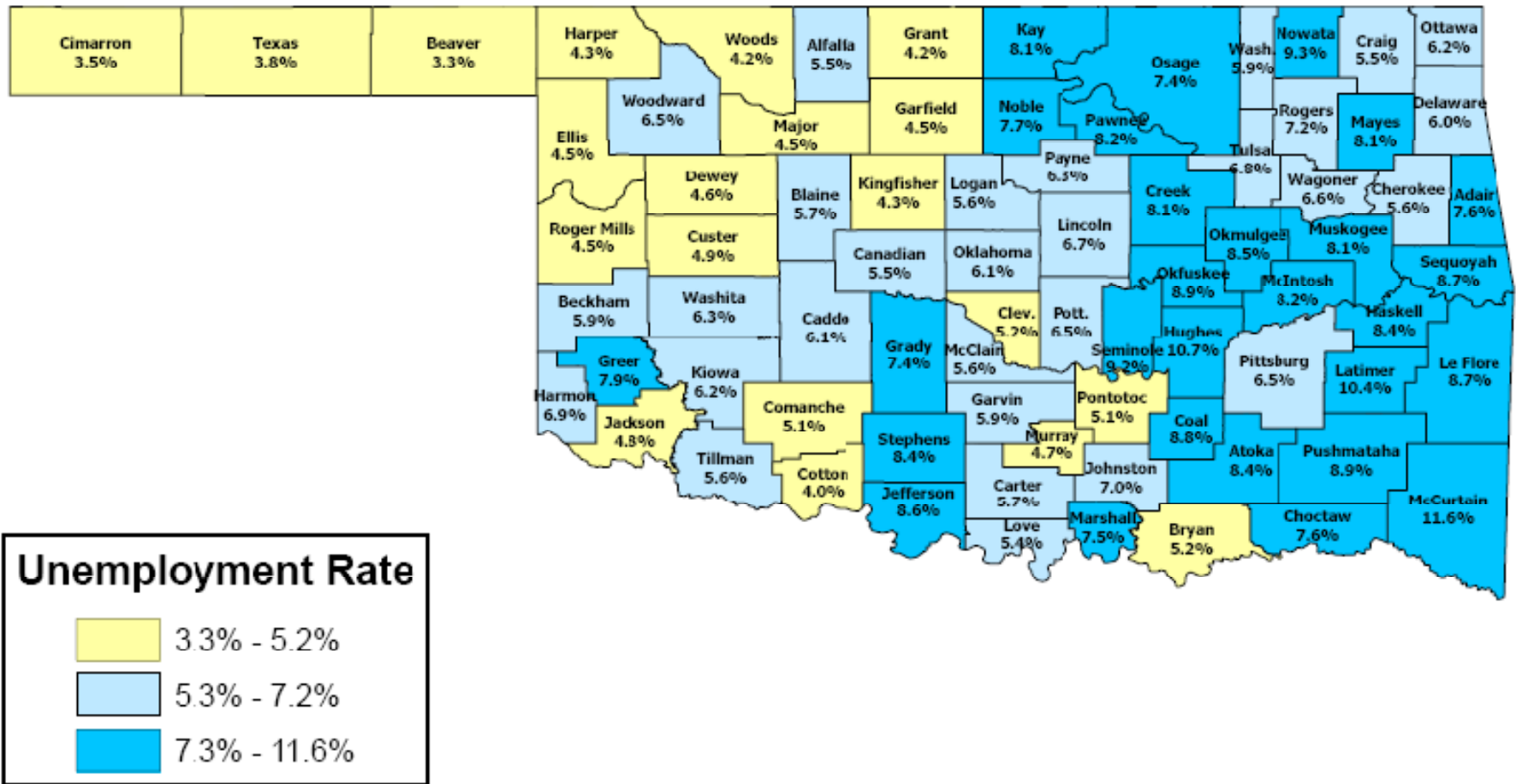
Employment Index



Unemployment Rate

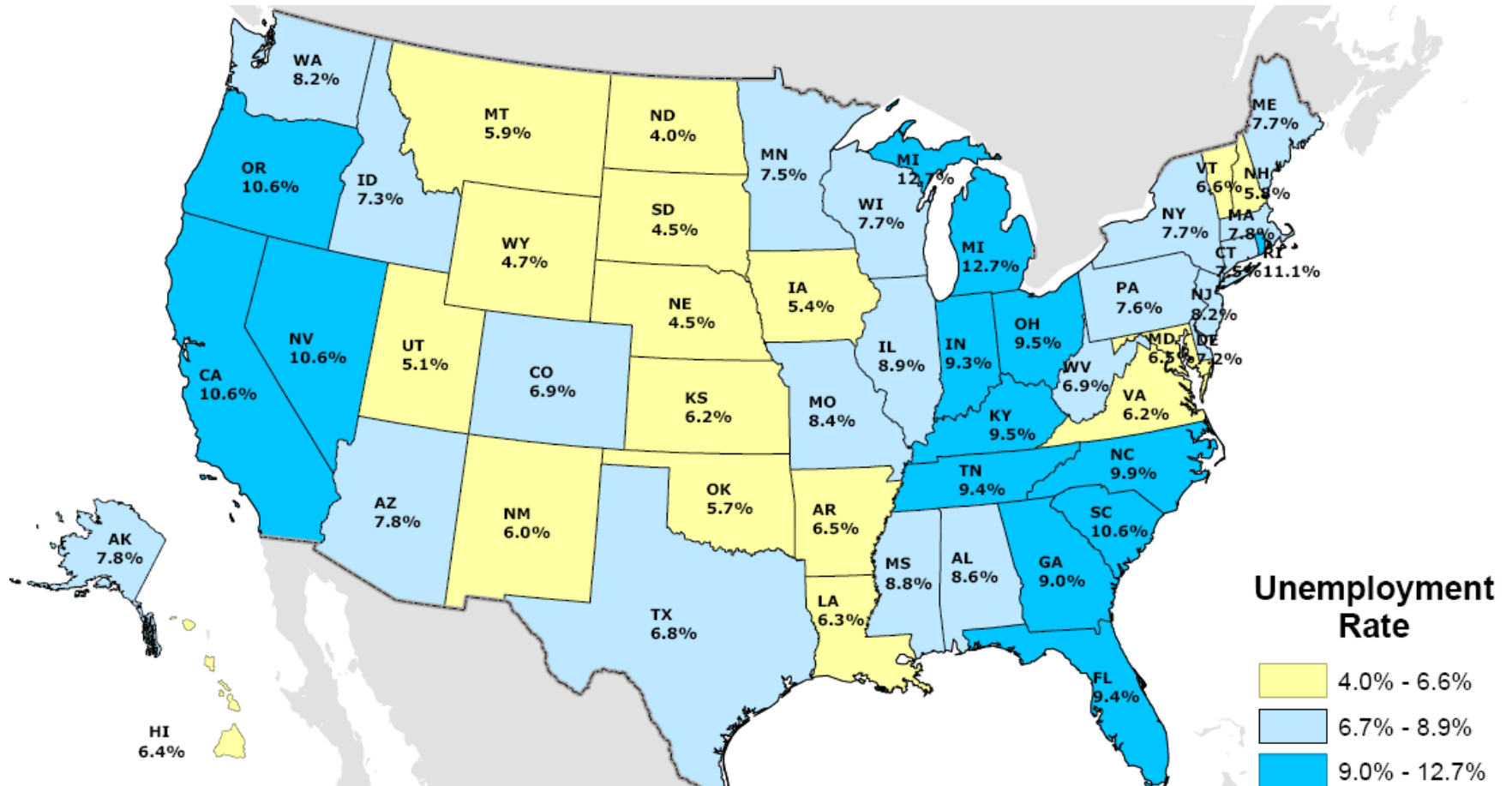


Unemployment Rate by County

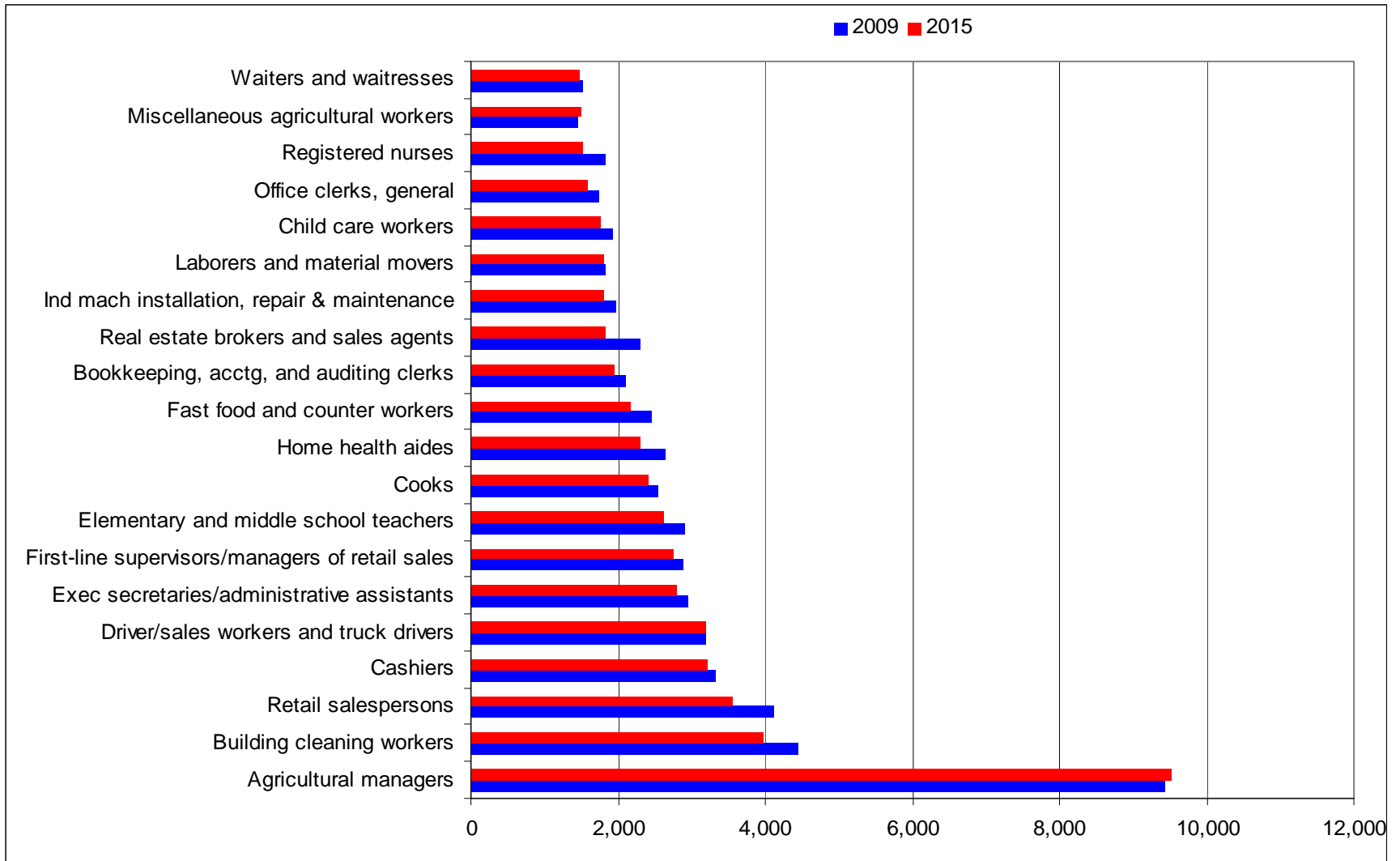


Source: September 2009: OESC (http://www.ok.gov/oesc_web/Services/Find_Labor_Market_Statistics/LAUS/)

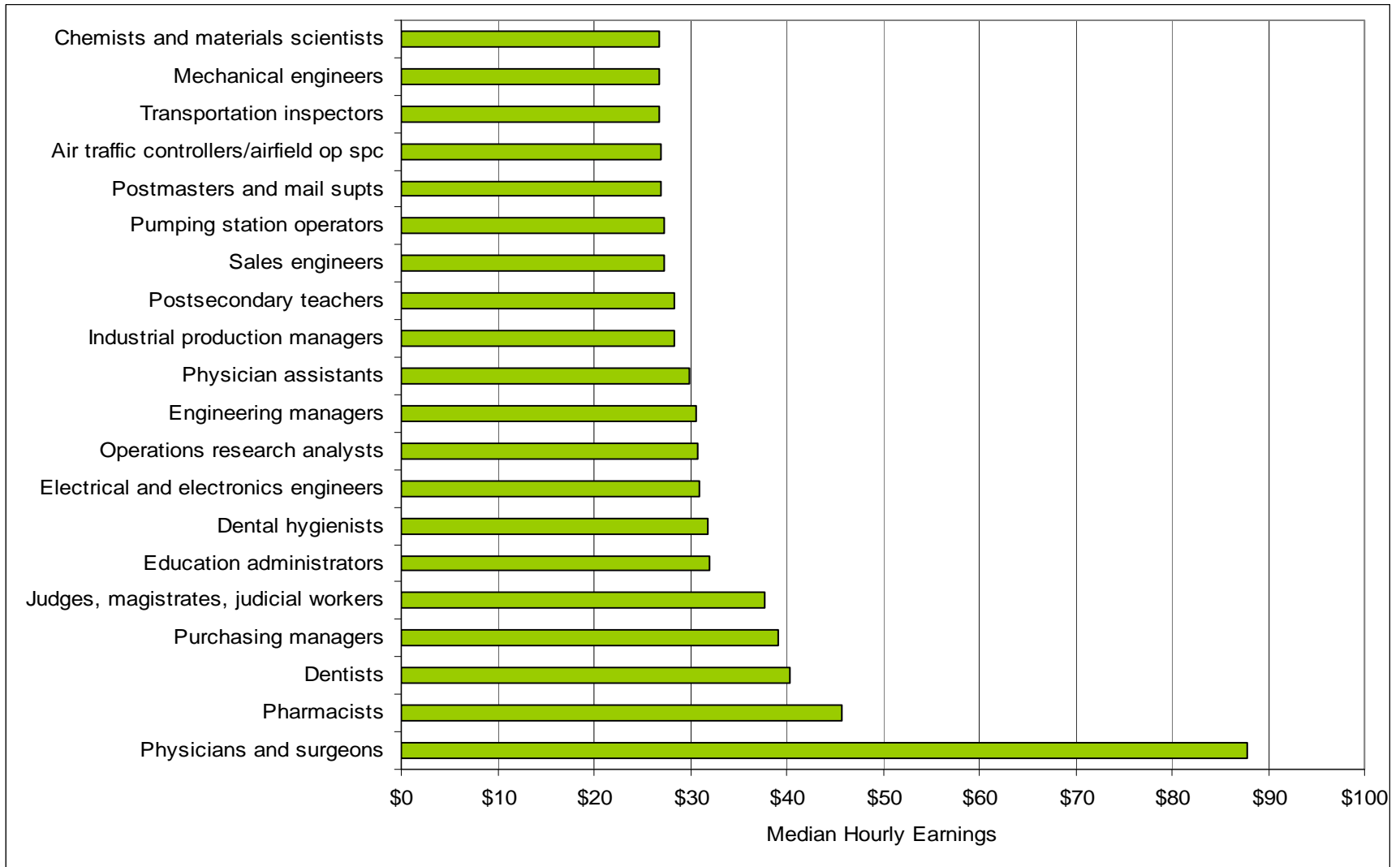
Unemployment Rate by State



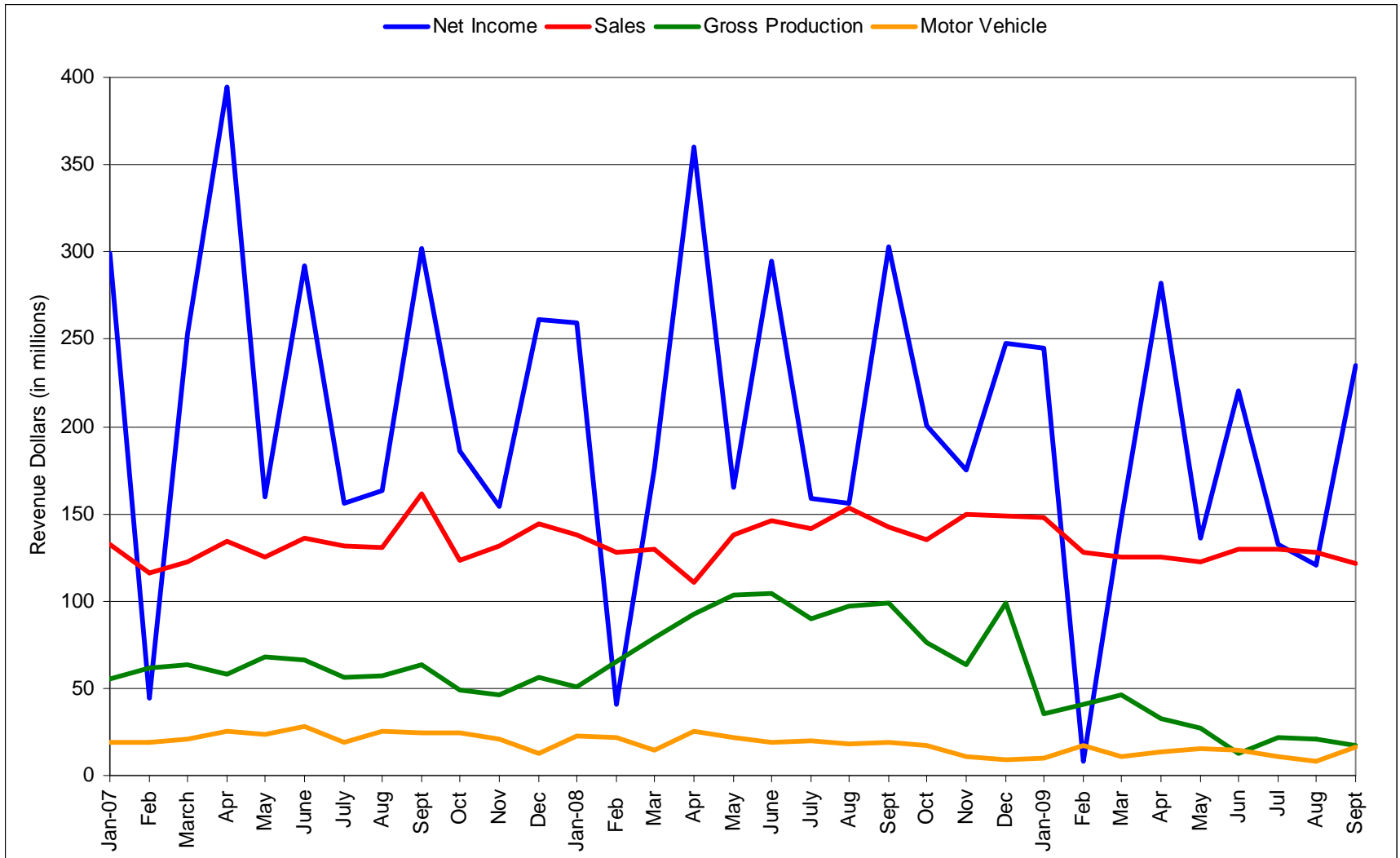
NE Region Top Net Occupations



NE Region Top Wage Occupations



OK State Revenues



Source: OK State Treasurer (<http://www.ok.gov/treasurer/documents/June%20Revenue%20PR%207-14-09.pdf>)

2009 Economic Indicators

- Population is shifting in the state; OK lags behind US in % within prime working age
- In the last three quarters, OK has felt the impact of the national recession in employment
- While OK's unemployed has grown, the state remains in the bottom quintile for unemployment rates
- Retail sales appear relatively steady although state revenues are being hit hard by lower energy prices and auto sales