



# NORTHEASTERN STATE UNIVERSITY

*Graduate College*



**YOUR** *Success.* **OUR** *Mission.*

TAHLEQUAH · MUSKOGEE · BROKEN ARROW · ONLINE

# Welcome to **YOUR** NSU!

The Graduate College is here to help you take your career to the next level. At NSU, you'll find engaged faculty, small class sizes, and student resources focused on your success. This is YOUR NSU Graduate College—*where your success is our mission.*

“

I love working with my students. I want to support their success. Whatever they want to do, I want to support their dreams and goals.

- *Dr. Moosong Kim, Faculty*

“

I liked how homey NSU was. It's small, and it had its own community; whereas, in some of the bigger schools it's easy to get lost.

- *Kaylee Swenson, Student*

“

I took advantage of everything that being a grad student had to offer and it really paid off. I learned so much, met so many people, and was able to give back so much.

- *Cody Robinson, Alumna*

It's very different from undergraduate school. Graduate school is made for people like me—working adults. If you're working, they know that, and try to work with you.

- *Kristian Marshall, Student*

At NSU, professors care about you. We invest in you the same way you invest in us. We believe in you.

- *Sarah Turner McGowen, Faculty*

# NSU Graduate College *at a Glance*

\*All values are from Fall 2017 data for 971 graduate students  
(does not include Optometry).

## 3 Campuses



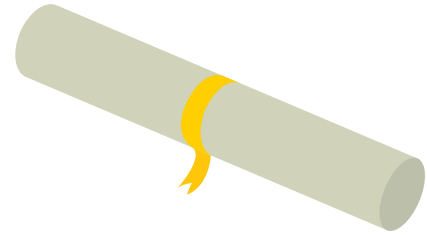
NSU Tahlequah



NSU Muskogee



NSU Broken Arrow



**20+** Degrees &  
Certificate Programs

## 3 Course Formats:

**Face-to-face, Blended & Online Classes**

Average class size:

**10.5 students**



*Scholarships available in  
every program*

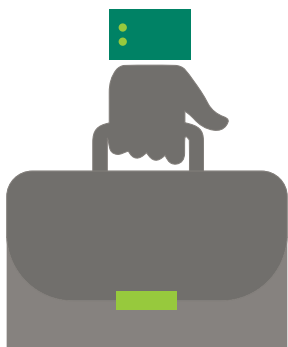


Average age =  
**34 years**

**70+**  
Assistantships  
available



**19:1** student to faculty/staff ratio



**170+**  
organizations  
send recruiters to  
at least one NSU  
Career Services  
event annually.

# YOUR *Future*

## COLLEGE OF BUSINESS & TECHNOLOGY

### ACCOUNTING & FINANCIAL ANALYSIS

30 hours  
\$8,800\*  
*Broken Arrow*

### MASTERS OF BUSINESS ADMINISTRATION

36 hours  
\$12,400\*  
*Broken Arrow, Online*

### PROFESSIONAL BUSINESS ADMINISTRATION

30 hours  
\$10,600\*  
*Broken Arrow*

## COLLEGE OF EDUCATION

### COUNSELING

60 hours  
\$17,000\*  
*Tahlequah, Broken Arrow*

### HIGHER EDUCATION LEADERSHIP

36 hours  
\$12,000\*  
*Tahlequah, Broken Arrow, Online*

### READING

32 hours  
\$10,800\*  
*Tahlequah, Broken Arrow, Online*

### EARLY CHILDHOOD EDUCATION

32 hours  
\$10,100\*  
*Tahlequah, Broken Arrow*

### INSTRUCTIONAL LEADERSHIP

36 hours  
\$12,000\*  
*Tahlequah, Broken Arrow, Online*

### SCHOOL ADMINISTRATION

36 hours  
\$12,000\*  
*Tahlequah, Broken Arrow, Muskogee, Online*

### HEALTH AND KINESIOLOGY

32 hours  
\$10,800\*  
*Tahlequah*

### LIBRARY MEDIA & INFORMATION TECHNOLOGY

33 hours  
\$11,100\*  
*Broken Arrow, Online*

### SPECIAL ED. AUTISM SPECTRUM & DISORDERS

33 hours  
\$11,100\*  
*Tahlequah, Muskogee, Broken Arrow*

## COLLEGE OF LIBERAL ARTS

### AMERICAN STUDIES

36 hours  
\$12,100\*  
*Tahlequah, Broken Arrow, Online*

### CRIMINAL JUSTICE

36 hours  
\$12,100\*  
*Tahlequah, Broken Arrow, Online*

### SOCIAL WORK

32 hours, Advanced Standing Pathways  
\$9,200\*  
58 hours, Traditional Pathways  
\$16,700\*  
*Tahlequah*

### COMMUNICATION ARTS

36 hours  
\$12,100\*  
*Tahlequah*

### ENGLISH

36 hours  
\$10,400\*  
*Tahlequah, Broken Arrow*

## GREGG WADLEY COLLEGE OF SCIENCE & HEALTH PROFESSIONS

### MATHEMATICS EDUCATION

35 hours  
\$11,600\*  
*Tahlequah, Broken Arrow*

### OCCUPATIONAL THERAPY

81 hours  
\$28,800\*  
*Muskogee*

### SPEECH LANGUAGE PATHOLOGY

53 hours  
\$16,300\*  
*Tahlequah*

### NATURAL SCIENCE

36 hours  
\$11,000\*  
*Tahlequah, Broken Arrow*

### PHYSICIAN ASSISTANT STUDIES+

118 hours  
\$57,000\*  
*Muskogee*

### NURSING

32 hours  
\$11,500\*  
*Online*

### SCIENCE EDUCATION

36 hours  
\$12,600\*  
*Tahlequah, Broken Arrow, Online*



CERTIFICATE PROGRAMS

**READING SPECIALIST**

20 hours

\$6,700

*Tahlequah, Broken Arrow*

**SCHOOL ADMINISTRATION**

24 hours, Principal

\$8,000

*Tahlequah, Broken Arrow, Online*

36 hours, Superintendent

\$4,000

*Tahlequah, Broken Arrow, Online*

**SCHOOL LIBRARY MEDIA SPECIALIST**

23 hours

\$7,700

*Broken Arrow, Online*

+ Pending provisional accreditation

\* Fees include: facility fee, student activity fee, infrastructure fee, cultural/scholastic lecturer fee, student ID fee, technology services fee and remedial course fee, if applicable. NSU courses taught at off-campus locations or online might have additional fees assessed.

These totals are tuition and fee estimations per program based on the 18-19 catalog year. Books, supplies and some fees may not be included.

Visit [nsuok.edu/tuition](http://nsuok.edu/tuition) for detailed information.

# Gregg Wadley College of *Science & Health Professions*

The **Gregg Wadley College of Science & Health Professions** at Northeastern State University provides students with an exceptional, quality education in the sciences.

As the healthcare industry continues to expand, this college strives to meet the increasing demand for skilled workers in the areas of Occupational Therapy, Nursing, Speech-Language Pathology, Criminal Justice, Health and Kinesiology, Natural Sciences and Physician Assistant Studies.

227   
Graduate  
Students

7 Graduate  
Degrees



*Dr. Heather Fenton*

## Top *faculty*

Dr. Heather Fenton, assistant professor in nursing, is one of many faculty experts who inspire and encourage future science and health industry leaders. She was recently named one of the Great 100 Nurses in Oklahoma.

## In-field *opportunities*

Immersive learning opportunities are a regular part of the college's graduate programs. Natural Studies department graduate student Abbey Ramirez and her faculty mentor Dr. Mia Revels partnered to conduct research on the Northern Saw-whet Owl in Oklahoma. Just two years ago, there were fewer than 10 confirmed recordings of this owl, but thanks to their research there are more than 35.



## Meaningful *research*

Graduate students can get a leg up on the competition through collaborative research. Rachel Hoffmeister, a graduate student in the Department of Natural Sciences, and her faculty mentor Dr. Sung-Kim have been investigating a detection method for cancerous genes. The ultimate purpose of their research is to develop highly sensitive probes that can distinguish cancerous genes among a large number of normal genes. Hoffmeister is learning how to design probes, use a vast variety of instruments, and analyze data from these research projects.



*Rachel Hoffmeister*

 **176**  
Graduate  
Students

**3** Graduate  
Degrees



# College of *Business & Technology*

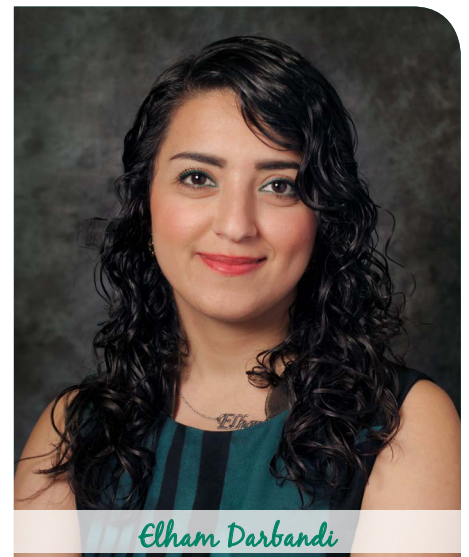
**The College of Business & Technology** offers graduates a state-of-the-art education that has been designed by and for highly successful regional employers. Faculty members perform well in the classroom and advance knowledge in their disciplines. Classes are offered on the Broken Arrow campus using traditional, blended and online delivery methods. Class sizes are small, allowing students to interact with faculty on a one-to-one basis.

## **Innovative** *academics*

In the Masters of Business Administration program, students have the opportunity to take a class called Creativity and Innovation. This class allows students a hands-on experience by creating a new product and developing a prototype. Once completed, they will pitch their ideas to industry experts, and get solid feedback to enhance their business skills.

*"As an international student, the MBA program allowed me to learn not only new business models from the current area, but globally as well! The MBA program gave me success in the real world and taking it online made it easy!"*

—Elham Darbandi, MBA graduate



*Elham Darbandi*

## **Immersive** *faculty*

Now in her 15th year of teaching at Northeastern State University, Dr. Dilene Crockett, Associate Professor of Management, is passionate about the subjects she teaches. With a focus on immersive learning, Crockett recently designed a course to help students with the soft skills they will need when they graduate and begin their careers. Fifteen professionals and more than 23 students attended the "eye-opening" course that created an understanding between the generations. Crockett was honored as a recipient of NSU's Circle of Excellence award in 2016.



*Dr. Dilene Crockett*

# College of Education

The **College of Education** shapes the future of Northeast Oklahoma as the educational partner of choice with flexible formats, including several online degrees, expert, accessible faculty and accredited, in-demand degrees.

The college is known for effectively preparing educators, professional school personnel and other allied professions to have a positive impact on the lives of students, families and communities.

570   
Graduate  
Students

9 Graduate  
Degrees



Dr. Tobi Thompson

## Excellent faculty

NSU's outstanding faculty focus on preparing teaching scholars, educational leaders and developers of human potential.

*"At NSU, I am able to instill in my students a passion for teaching, the knowledge that children are more important than test scores and content, the belief that if a teacher teaches effectively, all students can learn, and the insight that not all children learn the same way."*

—Dr. Tobi Thompson, COE Associate Professor, Director of the Cappi Wadley Reading & Technology Center, 2018 DaVinci Fellow



Nikki Jones

## Engaging leaders

NSU graduate students engage in faculty research, grants and professional associations.

*"I earned a graduate assistantship. My faculty advisor encouraged me to engage with and present my research at professional associations. I've networked with and met contacts in my field that expand my opportunities even further."*

—Nikki Jones, M.S. Higher Education Leadership, 2018 NASPA-IV West Rising Star Awardee



Jacqueline Epps

## Accessible advocates

Caring faculty mentors and advisors ensure students embrace all the opportunities available to them.

*"The Graduate College and my advisor provided a scholarship for myself and other students to attend the Oklahoma Policy Institute. It was an amazing experience. I hope I can pay this forward as I develop in my career and become an effective advocate for K-12 education and mental health in Oklahoma."*

—Jacqueline Epps, M.S. Counseling



 **101**  
Graduate  
Students

**5** Graduate  
Degrees



# College of Liberal Arts

**College of Liberal Arts** graduate programs offer students hands-on experiential learning—in and outside the classroom. Here, students develop and refine communication, research and problem-solving skills. Small classes offered in Tahlequah, Broken Arrow and online ensure opportunities to collaborate and engage with faculty and other students.

## Successful alumni

COLA graduates find success in many fields.

Lori Lewis '12, is currently an investor relations manager for the Broken Arrow Chamber of Commerce. Previously, Lewis served as executive director for The Museum, Broken Arrow.



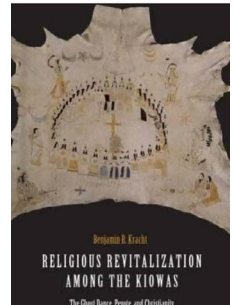
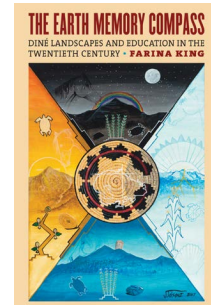
Lori Lewis

## Engaged professors

Publishing, presenting and engaging in research and outreach are all ways NSU faculty stay engaged in their respective subjects and industries. Farina King, assistant professor of history, published *The Earth Memory Compass: Diné Landscapes and Education in the Twentieth Century* in October 2018.

Cherokee and Indigenous Studies department chair Dr. Ben Kracht has published *Kiowa Belief and Ritual and Religious Revitalization Among the Kiowas: The Ghost Dance, Peyote and Christianity*.

Dr. Iain Anderson, Department of History Chair and American Studies Director, launched the Indigenous History and Literacy Project, which seeks to help elementary and secondary teachers improve historical thinking, reading ability and indigenous history awareness among their students.



Dr. Iain Anderson

## Career experience

COLA graduate students can expand their skill set and career confidence through immersive learning opportunities.

*"The Communication program has given me the opportunity to get hands on-experience as a Graduate Assistant, learning and immersing myself in the field that I wish to work in one day."*—Atlanta Proctor, Communications



Atlanta Proctor

# YOUR *Team*

As a graduate student at Northeastern State University, you'll have a built-in support system that's here to assist you every step of the way. Here are a few of the services available to you:



## *Academics:*

As soon as you're accepted, you'll be matched with an academic adviser who will help guide you through your time as a graduate student.

## *Career:*

NSU Career Services offers a full range of resources designed to help you advance your career. Visit [hireNSUGrads.com](https://hireNSUGrads.com) for a complete list of events and services.

## *Financial Aid:*

The Office of Student Financial Services can tell you all of the options available to help fund your education, including federal student aid. Contact [financialaid@nsuok.edu](mailto:financialaid@nsuok.edu) for more information.

## *Health:*

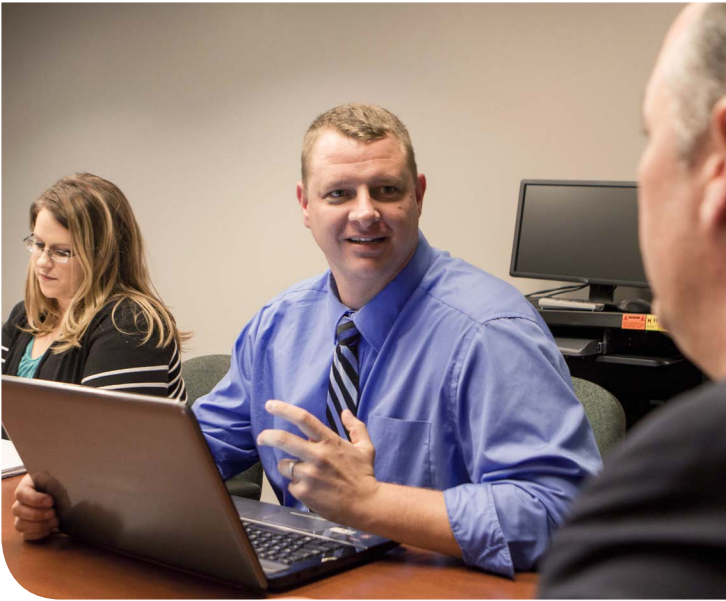
NEO Health in Tahlequah provides a health clinic that is available to all NSU students.

Free counseling and victim advocacy services are available through HawkReach Student Services. Learn more at [hawkreach@nsuok.edu](mailto:hawkreach@nsuok.edu).

Graduate students can use the FIT on the Tahlequah campus, or the TCC Southeast fitness facility (with student ID).

# YOUR Experience

At NSU, education is more than a classroom lecture. Expert professors use immersive learning opportunities to ensure you're fully prepared for your next steps. Working with professionals and participating in hands on projects bring classroom theory to life!



# YOUR Next Steps

## Complete the graduate college application at: [nsuok.edu/GoGrad](https://nsuok.edu/GoGrad).

To apply, you'll need the following:

- » An undergraduate GPA of 2.5 overall, a 2.75 GPA in your last 60 undergraduate hours, or entrance exam scores as designated in the Graduate Catalog.
- » Official transcripts of all previous course work.
- » International students need TOEFL.  
*More information is available in the international student graduate application.*

## Contact your faculty adviser to discuss your plan of study.

Your faculty advisor works with you to develop a plan of study that fits your life and career path.

## Consider your financial aid options.

- » Graduate college scholarships are available through the academic program and the NSU foundation. See [www.nsuok.edu/GradFinAid](https://www.nsuok.edu/GradFinAid) for more information.
- » The office of Student Financial Services is available to explore financial aid options. For more information, visit [nsuok.edu/financialaid](https://nsuok.edu/financialaid).



# NORTHEASTERN STATE UNIVERSITY

## CONTACT GRADUATE ADMISSIONS & RECRUITMENT

**Joshua McCollum**

*Graduate College Coordinator – Advising & Admissions*  
mccolluj@nsuok.edu  
918.444.2093 | Tahlequah

**Lydia Winford**

*Graduate College Coordinator – Advising, Engagement & Recruitment*  
winfordl@nsuok.edu  
918.444.6123 | Broken Arrow

.....  
**Apply today at [nsuok.edu/GoGrad](https://nsuok.edu/GoGrad).**  
.....

*Follow us on social media!*

 @NSUGradCollege

  @NSUGraduateCollege